



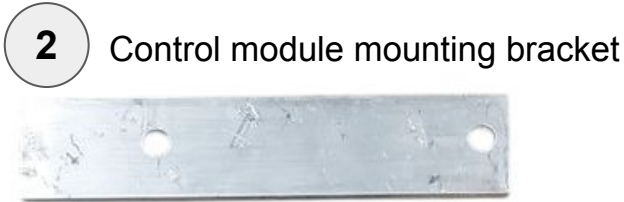
# PART LIST | Page 1

Power Steering for SKI-DOO 600/850 GEN 4-5 | 2 stroke (without Rack)



1

ECU mounting bracket



2

Control module mounting bracket



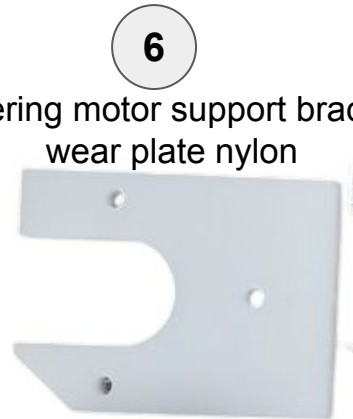
3

5/16 adjustable dog bone



5

Steering motor support bracket



6

Steering motor support bracket wear plate nylon



7

Steering post support

8

Steering post support brackets

8



9



Steering post pillow block support with o-rings



# PART LIST | Page 2

Power Steering for SKI-DOO 600/850 GEN 4-5 | 2 stroke (without Rack)

10

Mounting Bracket



11

Idler arm



14

Steering post



12

Pitman Arm



13

Idler arm bushing



15

Spacer






# FASTENER LIST


Power Steering for SKI-DOO 600/850 GEN 4-5 | 2 stroke (without Rack)


1   
8mm x 1 1/4  
bolts for mounting bracket

2   
Carriage bolt  
for steering post support  
(left hand side mount)

3   
Fasteners for steering motor  
support bracket wear plate nylon


4   
3/8 hex bolt  
for steering post support bracket  
(right hand side mount)


5   
Self tapping screw for  
ECU mounting bracket


6   
Pillow block spacers

7   
Steering post  
safety collar

8   
5/16 x 3 1/2"  
mounting hardware for pillow block

9   
Module hold down bolts


10   
Pillow block  
internal alignment spacers

11   
1/4 20 x 1"


12   
5/16 x 1"

13   
5/16 x 3"

14   
High Misalignment spacer

15   
Dog bone  
mounting bolts

16   
5/16 locking nuts

17   
5/16 washers

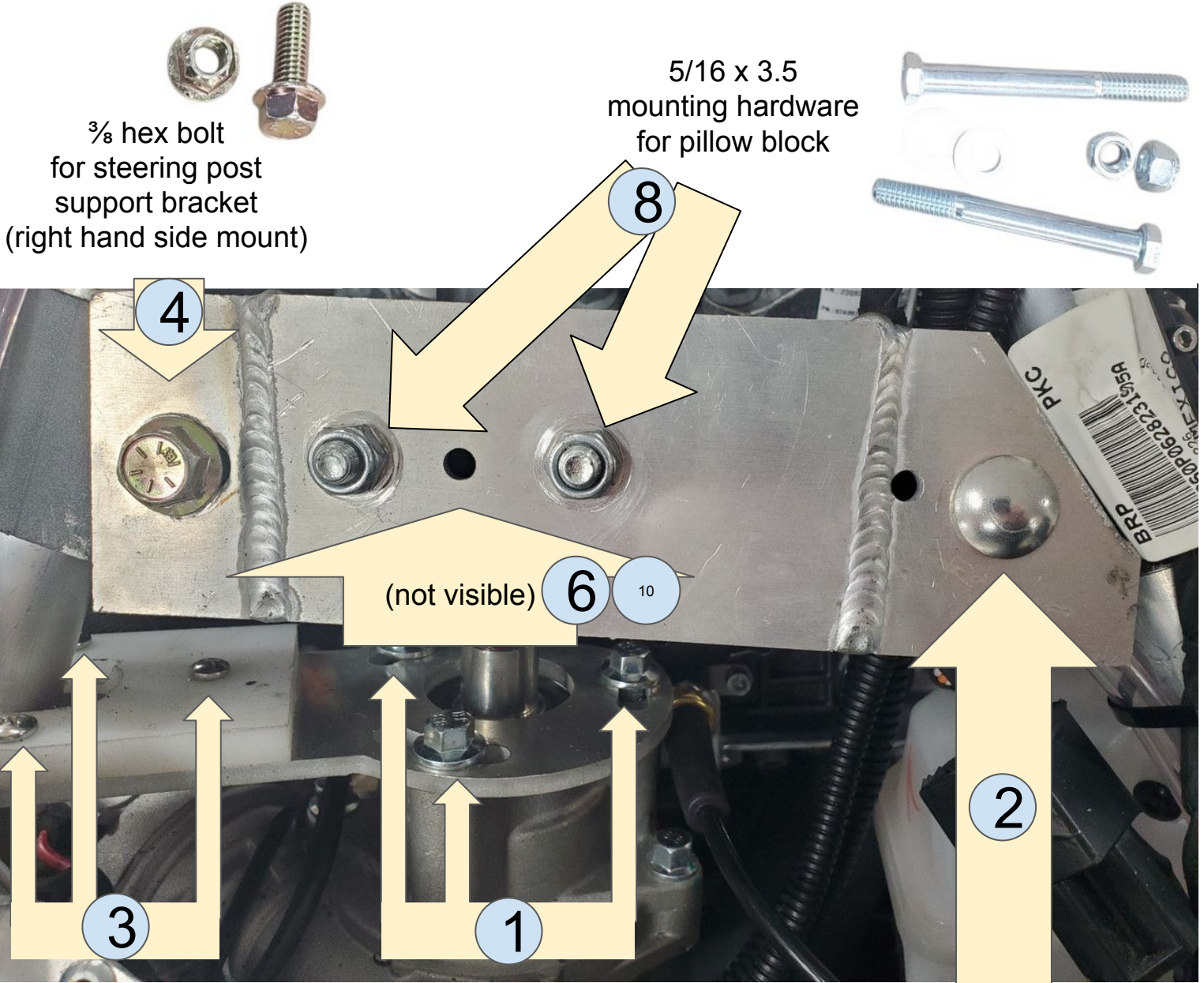
18   
1/4 20 lock nuts






# Guide Image | Page 1

Power Steering for SKI-DOO 600/850 GEN 4-5 | 2 stroke (without Rack)



  
3/8 hex bolt  
for steering post  
support bracket  
(right hand side mount)

  
5/16 x 3.5  
mounting hardware  
for pillow block

  
Fasteners for  
steering motor  
support bracket  
wear plate nylon

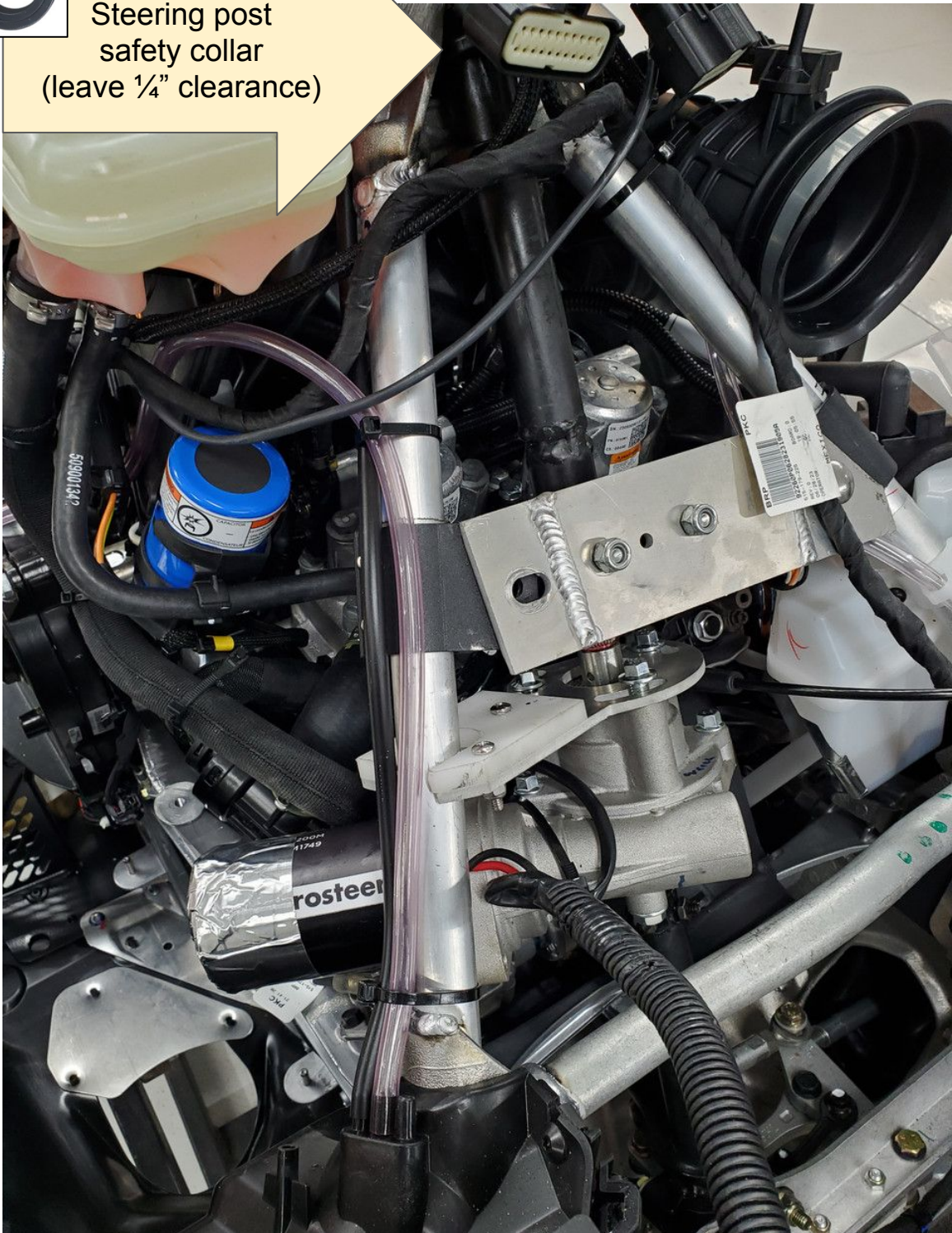
  
8mm x 1.25  
bolts for mounting bracket

  
Carriage bolt  
for steering post support  
(left hand side mount)



7

Steering post safety collar  
(leave 1/4" clearance)

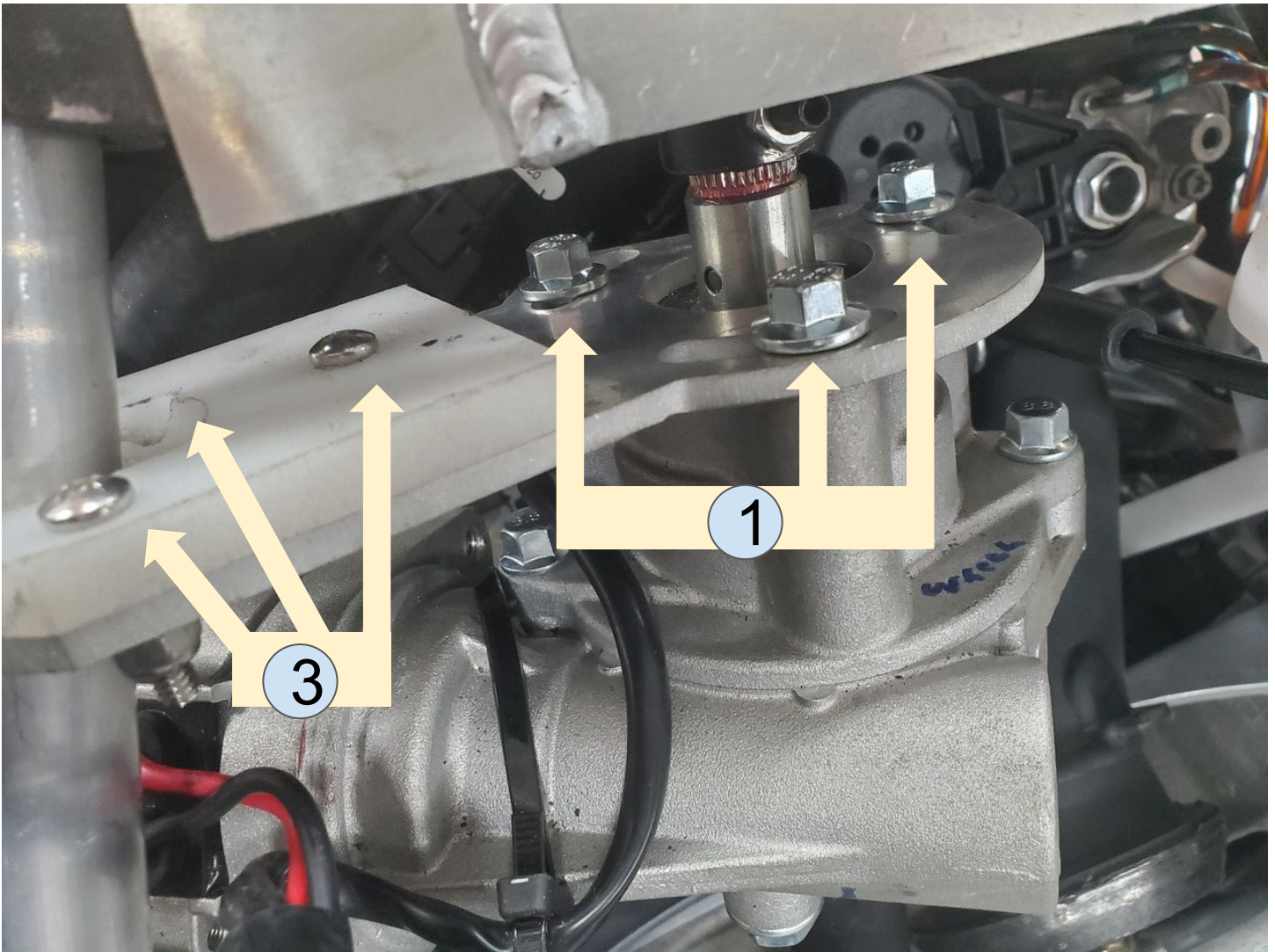






# Guide Image | Page 3

Power Steering for SKI-DOO 600/850 GEN 4-5 | 2 stroke (without Rack)







# Guide Image | Page 4

Power Steering for SKI-DOO 600/850 GEN 4-5 | 2 stroke (without Rack)

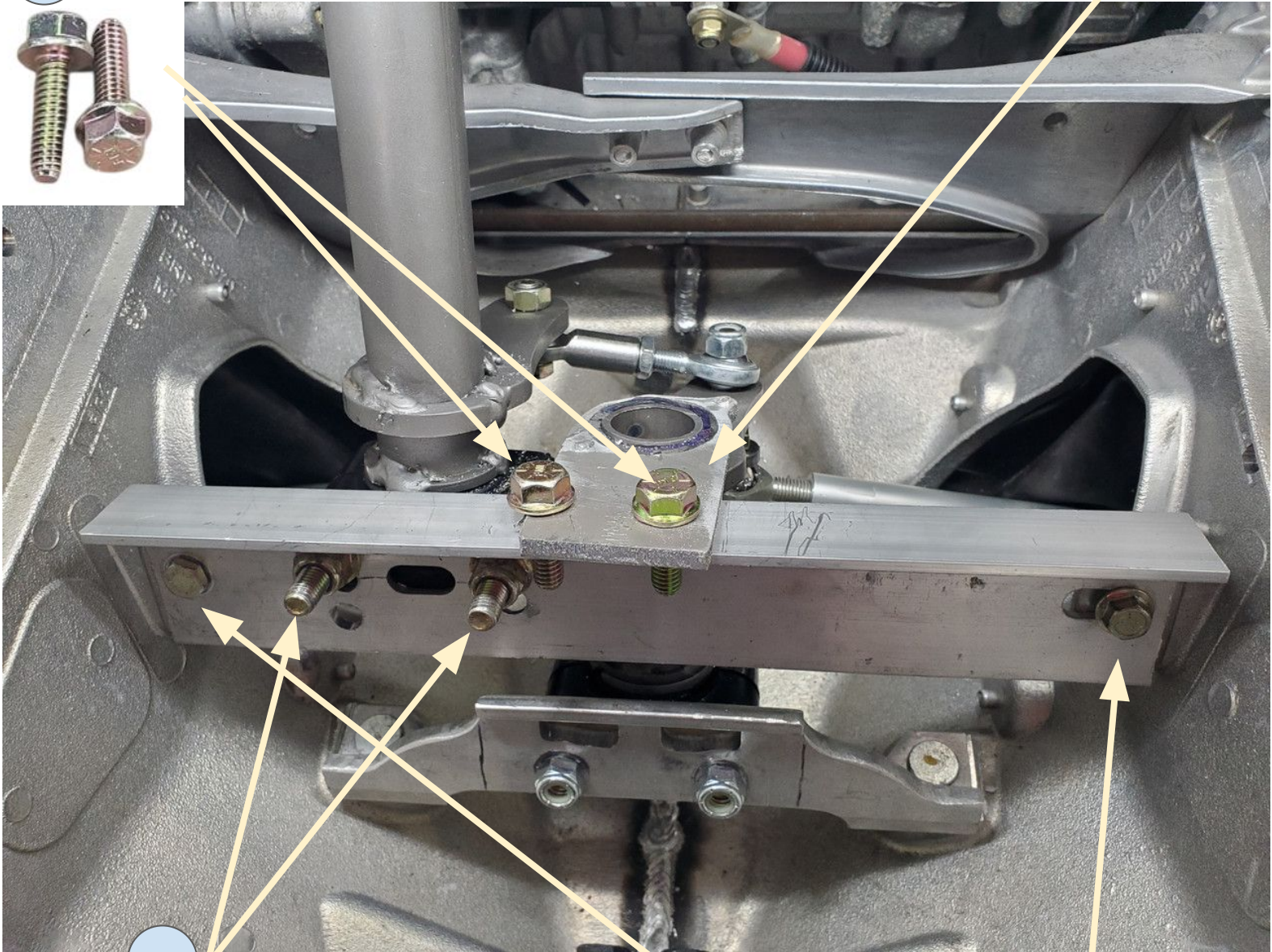
Idler arm bushing



12 5/16 x 1"



13



13



5/16 x 3"



18 1/4 20 lock nuts



11 1/4 20 x 1"





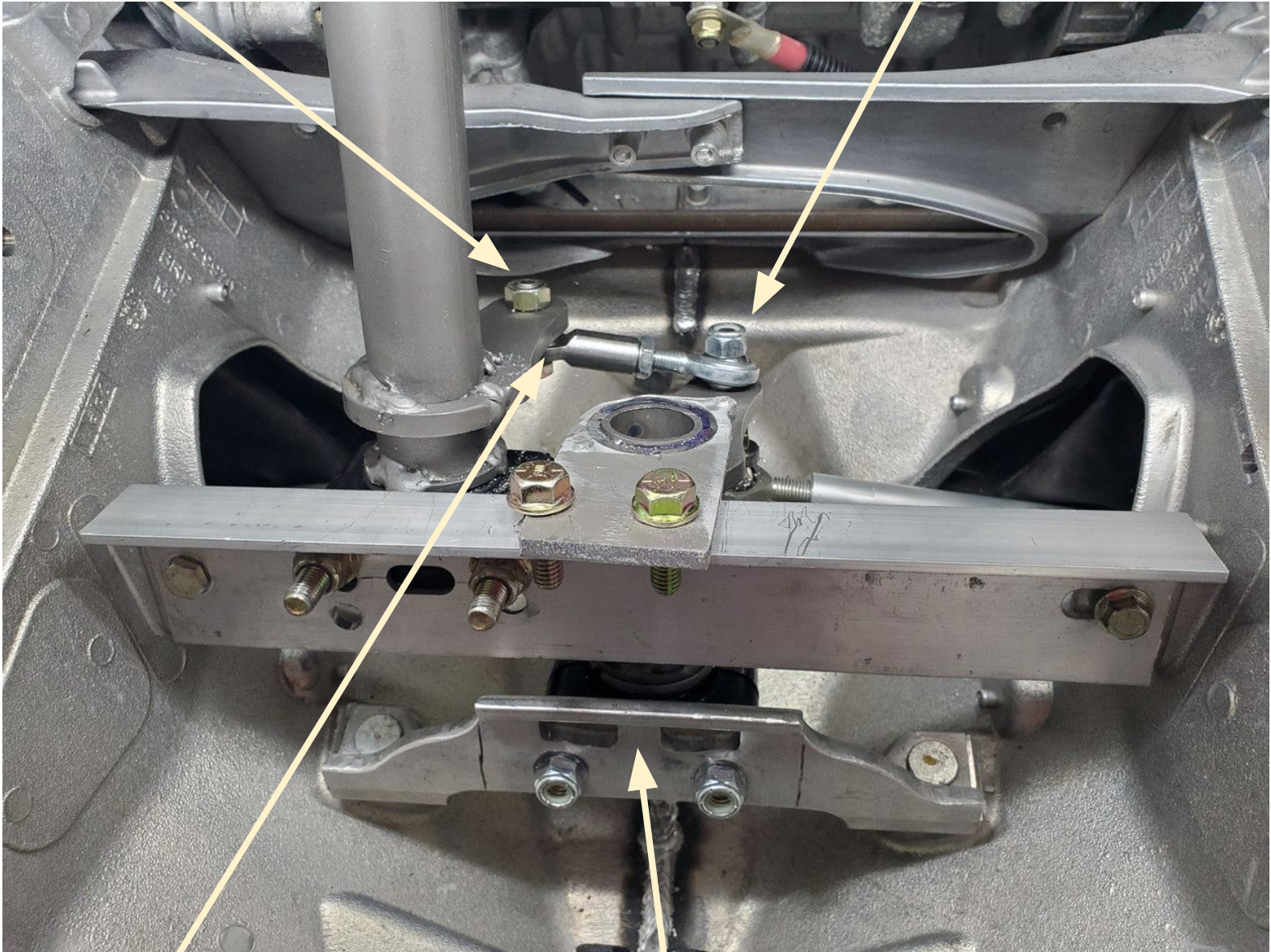
# Guide Image | Page 5

Power Steering for SKI-DOO 600/850 GEN 4-5 | 2 stroke (without Rack)

Dog bone mounting bolt  
1½" w/ lock nut



Dog bone mounting bolt  
1" w/ lock nut



High misalignment spacer  
(between dogbone & pitman arm)



Spacer to be  
installed behind  
bracket between  
pillow block



*This photograph is of mockup parts and does not represent a finished product.*