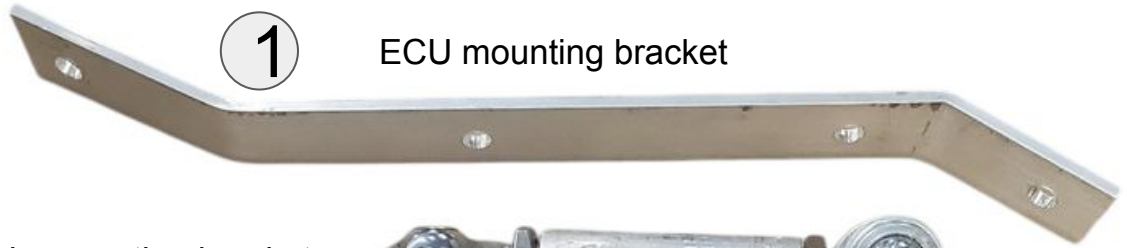




# PART LIST

Power Steering for SKI-DOO 600/850 GEN 4-5 | 2 stroke (with Rack)



1

ECU mounting bracket



2 Control module mounting bracket



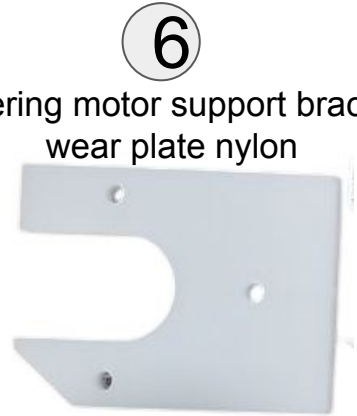
3 Adjustable dog bone



4 Weld in coupler



5 Steering motor support bracket



6

Steering motor support bracket wear plate nylon



7 Steering post support

8

Steering post support brackets

8



9

Steering post pillow block support with o-rings



# FASTENER LIST

Power Steering for SKI-DOO 600/850 GEN 4-5 | 2 stroke (with Rack)

1



8mm x 1.25 bolts for mounting bracket

2



Carriage bolt for steering post support (left hand side mount)

3



Fasteners for steering motor support bracket wear plate nylon

4



3/8 hex bolt for steering post support bracket (right hand side mount)

5



Self tapping screw for ECU mounting bracket

6



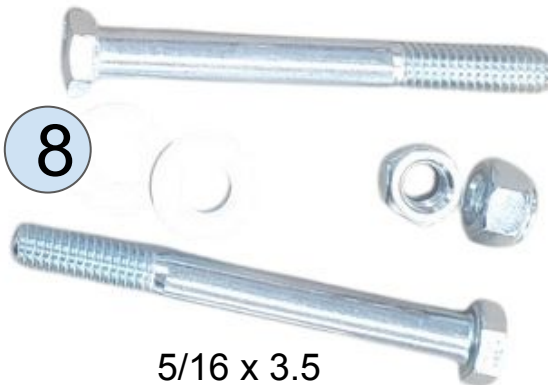
Pillow block spacers

7



Steering post safety collar

8



5/16 x 3.5 mounting hardware for pillow block

9



Module hold down bolts

10



Pillow block internal alignment spacers

11



5/16 x 3 1/4" bolt

12

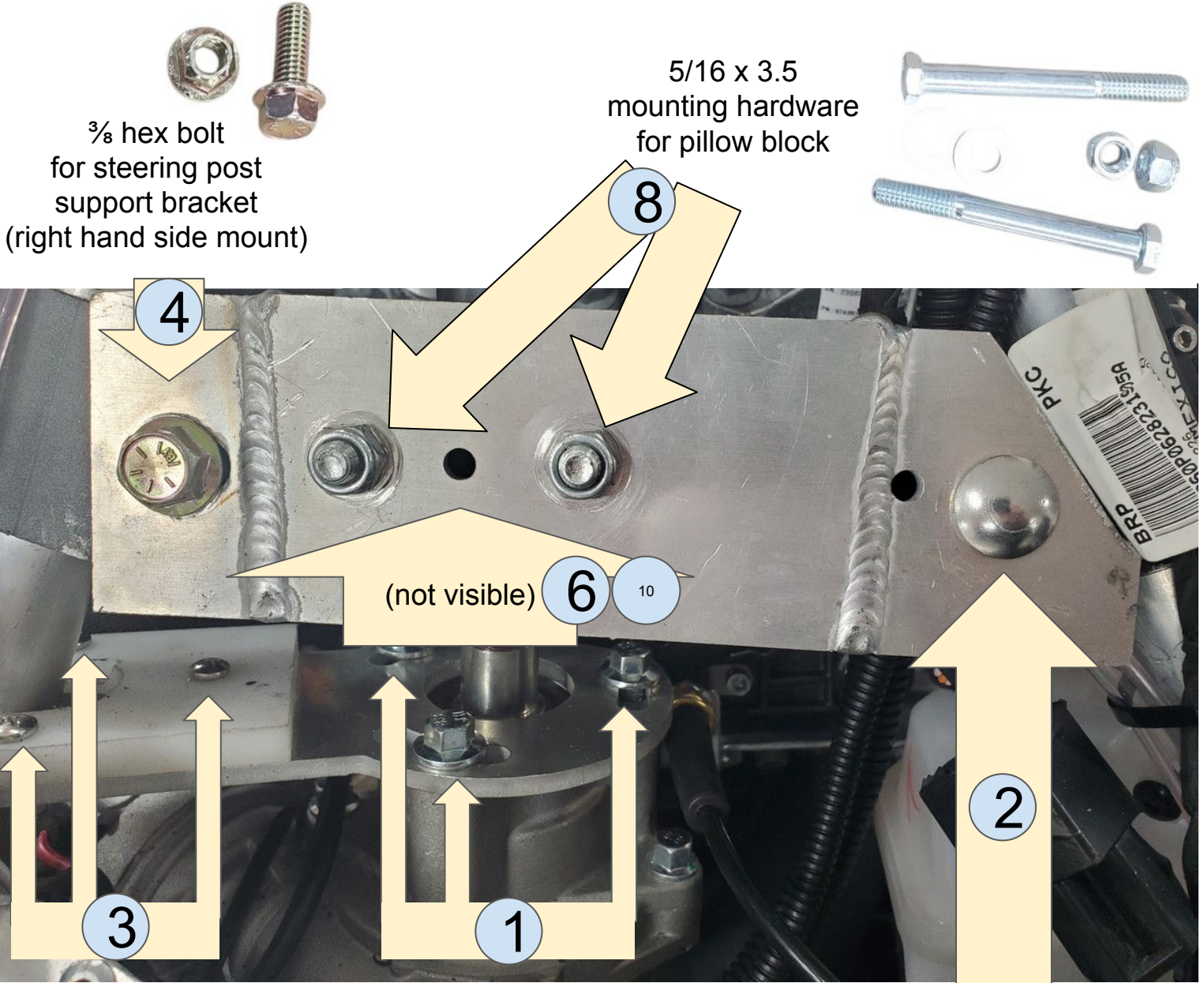


High Misalignment spacer

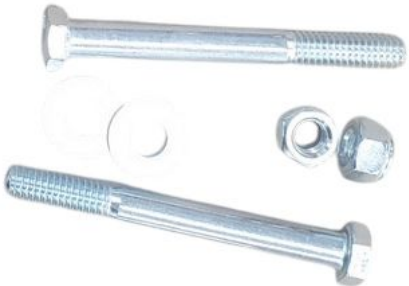


# Guide Image | Page 1

Power Steering for SKI-DOO 600/850 GEN 4-5 | 2 stroke (with Rack)



  
 3/8 hex bolt  
 for steering post  
 support bracket  
 (right hand side mount)

  
 5/16 x 3.5  
 mounting hardware  
 for pillow block

  
 Fasteners for  
 steering motor  
 support bracket  
 wear plate nylon

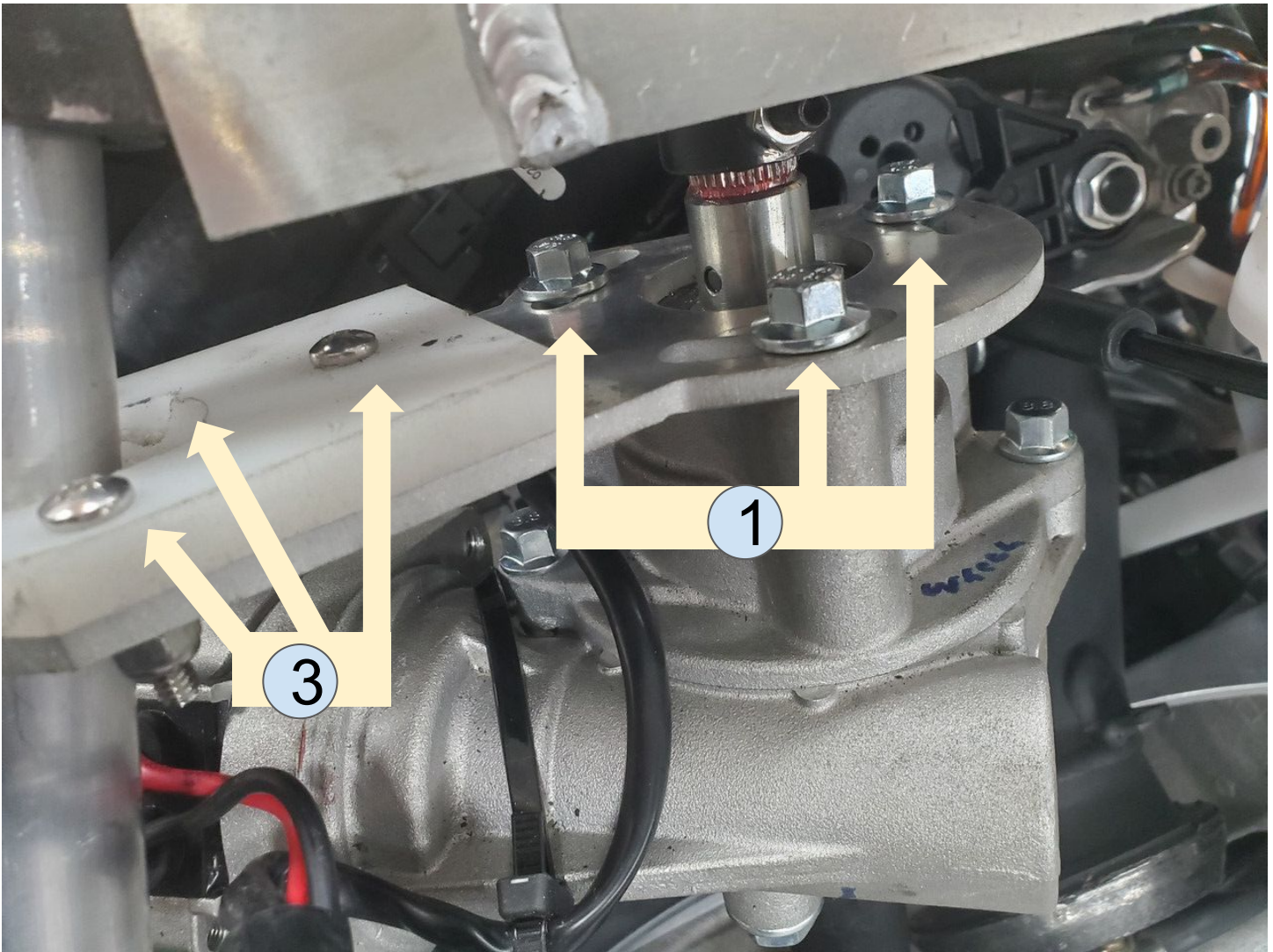
  
 8mm x 1.25  
 bolts for mounting bracket

  
 Carriage bolt  
 for steering post support  
 (left hand side mount)



# Guide Image | Page 2

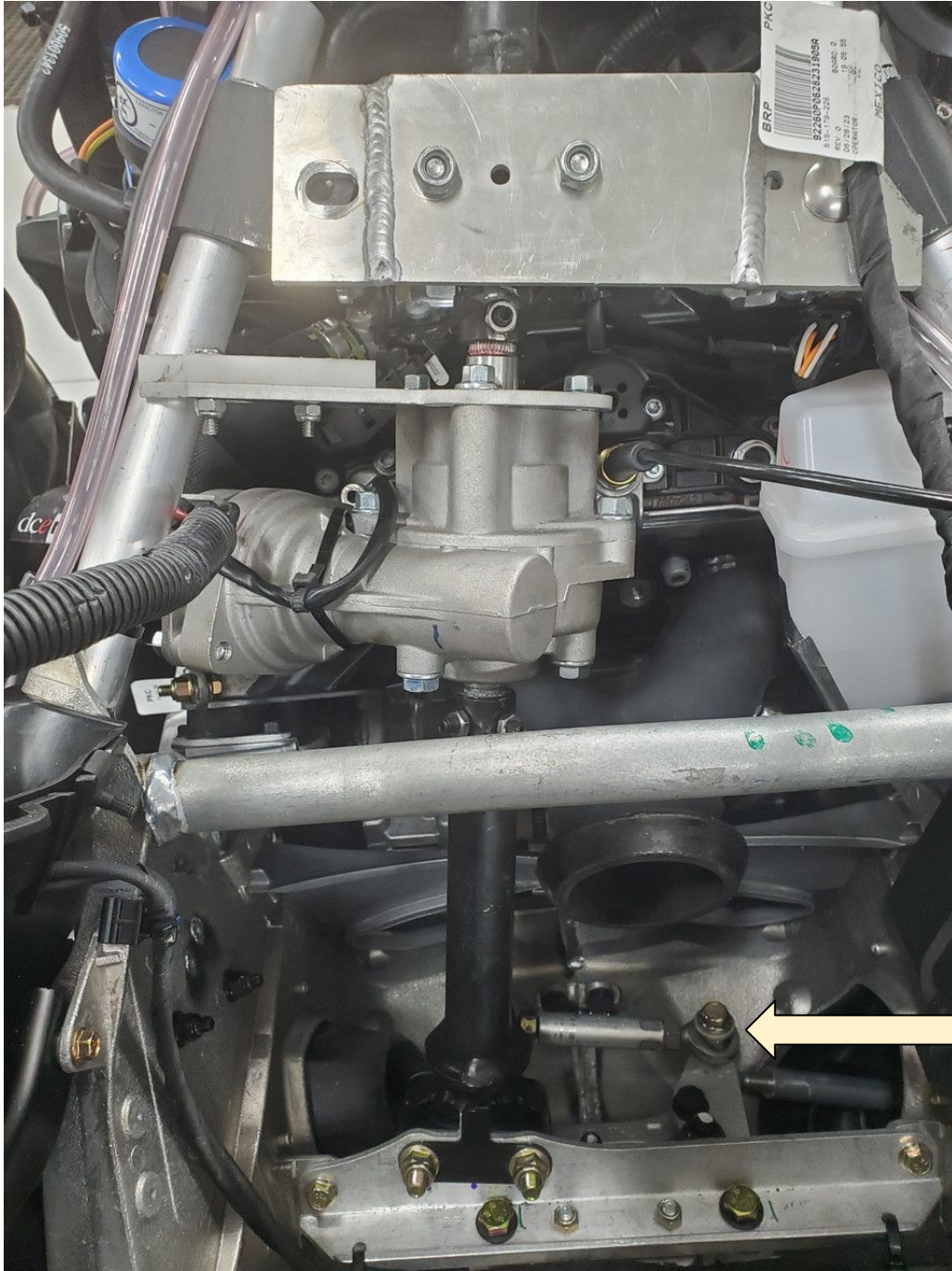
Power Steering for SKI-DOO 600/850 GEN 4-5 | 2 stroke (with Rack)





# Guide Image | Page 3

Power Steering for SKI-DOO 600/850 GEN 4-5 | 2 stroke (with Rack)



11

5/16 x 3 1/4" bolt



12

High Misalignment spacer

Install 5/16 x 3 1/4" bolt onto heim joint, through High Misalignment spacer, into drag link arm, then pickup tie rod and tighten assembly.



# Guide Image | Page 4

Power Steering for SKI-DOO 600/850 GEN 4-5 | 2 stroke (with Rack)



7

Steering post safety collar  
(leave 1/4" clearance)

